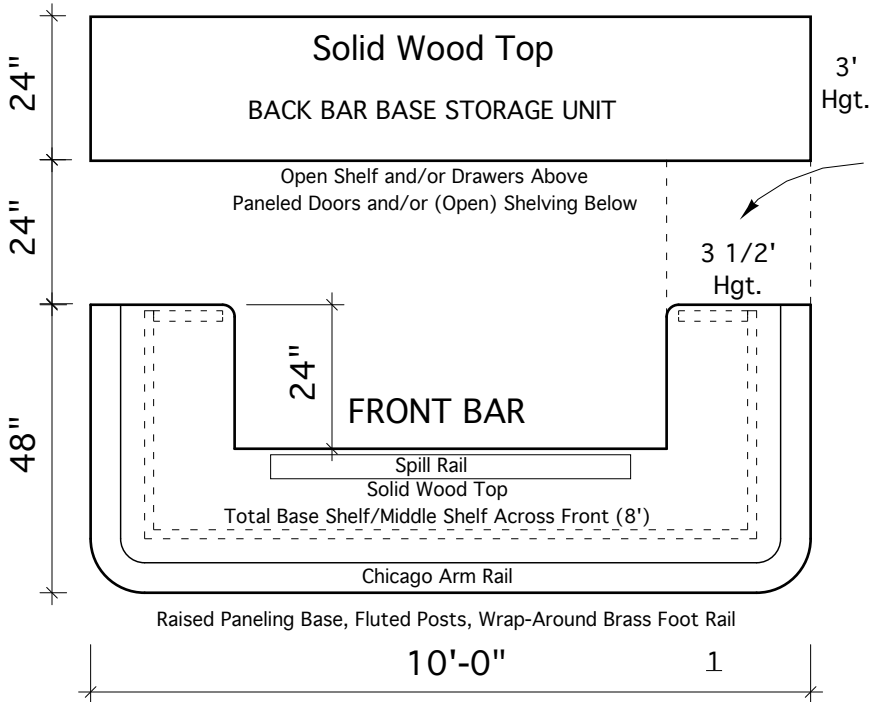
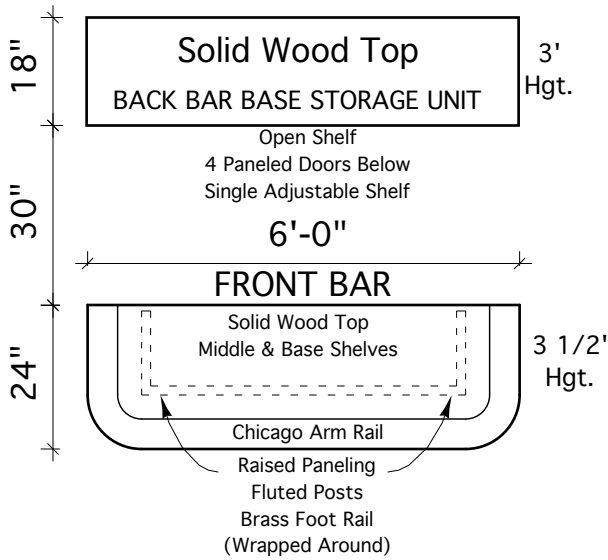


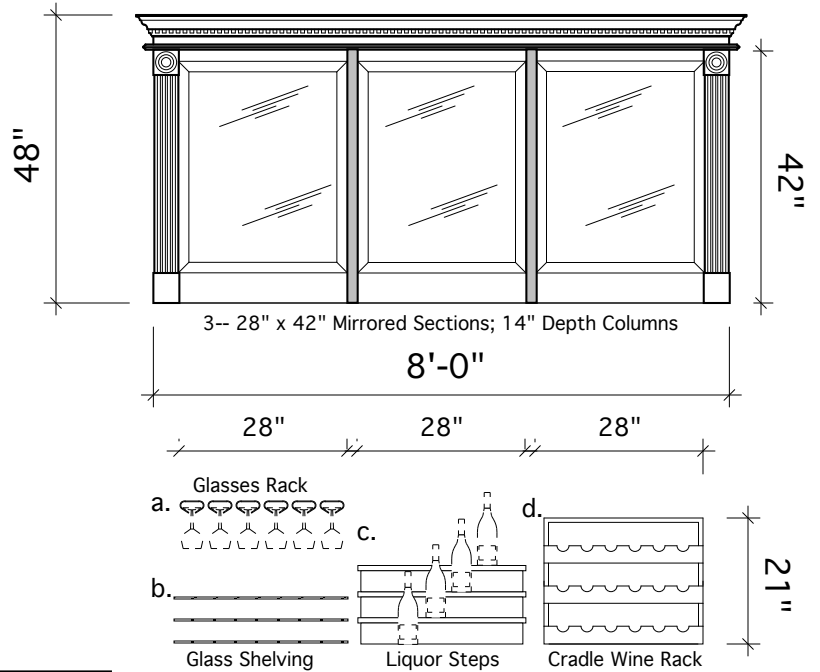
SPECIFYING YOUR OWN CUSTOM HOME BAR

Comparitive Varying Sizes Provided Below

TOP VIEWS



MIRRORED SUPERSTRUCTURE ELEVATION



INSERTS FOR MIRRORED SECTIONS

Possible Closure (Either Side)
 Increase Back Bar
 Base Unit Height to 3 1/2'

GUIDELINES

1. The estimated range of practical costs for most custom-crafted total home bar complexes, as described and illustrated, should be about \$10,000 - \$15,000. Front and back bar units can be acquired separately.
2. All home bar units can be modified to suit individual needs and preferences, such as use of applied molding paneling, addition of leaded glass doors to mirrored sections and selection of Victorian, round-columned superstructure styling.
3. Basic residential bar sizes (usually 6', 8', and 10' lengths) allow 2' to accommodate each stool (front and sides). Larger commercial bar configurations can also be readily designed for home application.
4. Appropriate space will be provided for the inclusion of owner-supplied equipment (ice bins, sinks, refrigeration) upon receipt of specifications.
5. We offer the ultimate elegance and value of mahogany construction with attractive dark red and brown tones at the same cost as oak with it's more informal image and normally light stains.
6. Home bar units are shipped blanket-wrapped as intact as possible for easy local installation.